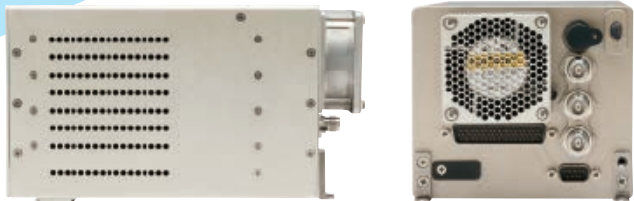


# RT-7000

## Remote-Mount Radio (RMR)

### Multi Band, Multi Transceiver



*Dual RMR installation provides up to six independent channels*

- 29.7 – 960 MHz AM/FM P25 Phase 1 & 2
- Each LRU accommodates up to three transceivers: Motorola APX 8000; Wideband; Search & Rescue
- Connectivity for up to two handheld devices
- Uniquely designed for maximum interoperability and upgradability



# Communications Without Limitations

Cobham's RT-7000 Airborne Tactical Radio is part of a comprehensive and flexible aircraft communications system. Installation options include panel, cabin, and remote positions.

### RMR, Remote-Mount Radio

The RT-7000RMR is an LRU designed to be rack-mounted in fixed-wing aircraft or helicopters. Each RMR can contain three independent transceivers, and will interface with up to two handheld radios. Two variants of the RMR mounting rack are available: single rack to accommodate one RMR, and a dual rack to accommodate two RMRs.

### Audio Panel

The RMR is designed to interface with standard aircraft audio systems. Channel 1 may be configured to interface directly with a headset.

### Antennas

The RMR has an independent coax output for each installed transceiver. The coax outputs may be connected to a variety of antennas and/or switches.



PMR



RMR



RCDU

### RT-7000 Airborne Tactical Radio Family

Whatever your mission or aircraft, the RT-7000 family has you covered from nose-to-tail:

- Panel-Mount Radio (PMR) – User-interfaced radio, designed for cockpit installation and use by Pilot or Co-pilot.
- Remote Control Display Unit (RCDU) – User-interfaced radio, designed for secondary-position installation, such as the cabin, and use by EMTs, TFOs, etc.
- Remote-Mount Radio (RMR) – Designed for remote installation, and is controllable by a PMR, RCDU, or MCDU. An interface control document is available for selected MCDU's.

### Incomparable Versatility

The architecture of the RMR is designed to accommodate up to three radio modules, covering the entire 29.7 – 960 MHz spectrum, delivering unsurpassed communication coverage. The configuration may be any combination of:

- Cobham Wideband Transceiver
- Motorola APX 8000
- Cobham Search and Rescue Module

### RMR Specifications

#### Tunability

1.25 kHz Incremental Tuning

#### Mode

FM/AM/P25/Trunking

#### Wideband Transceiver Frequency Bands

30.000-50.000 MHz	Mobile Radio
50.000-88.000 MHz	Military
88.000-117.999 MHz	FM Broadcast
108.000-118.000 MHz	VOR Voice
118.000-154.000 MHz	ATC and Civil Air Patrol
136.000-173.999 MHz	Mobile Radio
156.000-174.000 MHz	Maritime Radio
225.000-400.000 MHz	Military
380.000-959.999 MHz	Mobile Radio

Receive and/or transmit access to frequencies in each band may be configured

#### APX-8000 Module Bands

136-174 MHz	P25 VHF FM
380-520 MHz	P25 UHF FM
764-870 MHz	P25 7/800

#### Channeling

6.25/8.33/12.5/25.0 kHz

#### Search and Rescue Module Frequencies

121.5 MHz	AM (Civil Aircraft Emergency)
243.0 MHz	AM (Military Aircraft Emergency)
156.8 MHz	FM (Marine Voice Emergency)
156.525 MHz	FSK (Marine Digital Emergency)

#### Temperature

-40°C to + 55°C

Continued...

# RT-7000 Remote-Mount Radio (RMR)

## Multi Band, Multi Transceiver

### RMR Specifications Continued

#### Altitude

55,000 feet

#### Power Requirements

Nominal Input Voltage: 27.5 ±0.5 VDC  
 Range: 18 to 33 VDC input  
 Current: TX (normal) 10 amps max  
 RX (idle): 4 amps typical

#### Transmit Power

- ATC COMS – 4W Min
- AM – 4W Min
- FM – 10W
- P25 Conventional – 10W
- Motorola modules – VHF – 6W  
 – UHF – 5W  
 – 100/800 MHz – 3W
- Contact us about add-on external amplification options

#### APCO P25

- All P25 Bands – Conventional Common Air Interface (CAI)  
 – Phase 1, 2 Trunking  
 – Analog Trunking (SmartZone, SmartNet)

#### Encryption

- FIPS 140-2, Level 2/3
- P25 AES & DES
- Analog DES, DES-XL, DVP
- P25 OTAR
- Multikey

### Dimensions

	HEIGHT	LENGTH	WIDTH
Single RMR	4.38"	8.24"	5.00"
Double RMR	4.38"	16.48"	5.00"

### Weight

#### Single RMR

- < 10 lbs. (4.5 kg)
- 1 module: 6.8 lbs. (3.1 kg)
- 2 modules: 7.9 lbs. (3.6 kg)
- 3 modules: 8.9 lbs (4.0 kg)

#### Double RMR

- < 20 lbs. (9.0 kg)
- 2 modules: 13.6 lbs. (6.2 kg)
- 4 modules: 15.8 lbs. (7.2 kg)
- 6 modules: 17.8 lbs. (8.0 kg)

### Certification

- DO-160G/EUROCAE/ED14 test rated FCC Part 15, 22, 80, 87, 90
- EU (RED) Certification – Future
- Level C EUROCAE ED-12B
- RTCA DO-178C/EUROCAE/ED12 \*
- RTCA DO-254/EUROCAE/ED80 \*
- FAA TSO-C169a \*
- EASA ETSO-2C169a \*
- FAA STC/PMA – Future
- FCC Grant Approval – Certified to parts 15, 22, 80, 87, and 90
- Industry Canada (IC) Certified
- Anatel Brazil Certification – Pending

\* TSO Certification Pending



For further information please contact [Cobham Aerospace Connectivity](#)

6400 Wilkinson Drive, Prescott, AZ 86301, USA

Tel: +1 (928) 705 1550 Fax: +1 (928) 541 7627

E-mail: [sales.prescott@cobham.com](mailto:sales.prescott@cobham.com)

[cobham.com](http://cobham.com)

V1 8/2018 Ref: 13981

©Cobham plc 2017

The information shown in this datasheet is given in good faith and is intended for guidance only. It should not be used for specifications and no warranty is given or is implied with respect to such information.